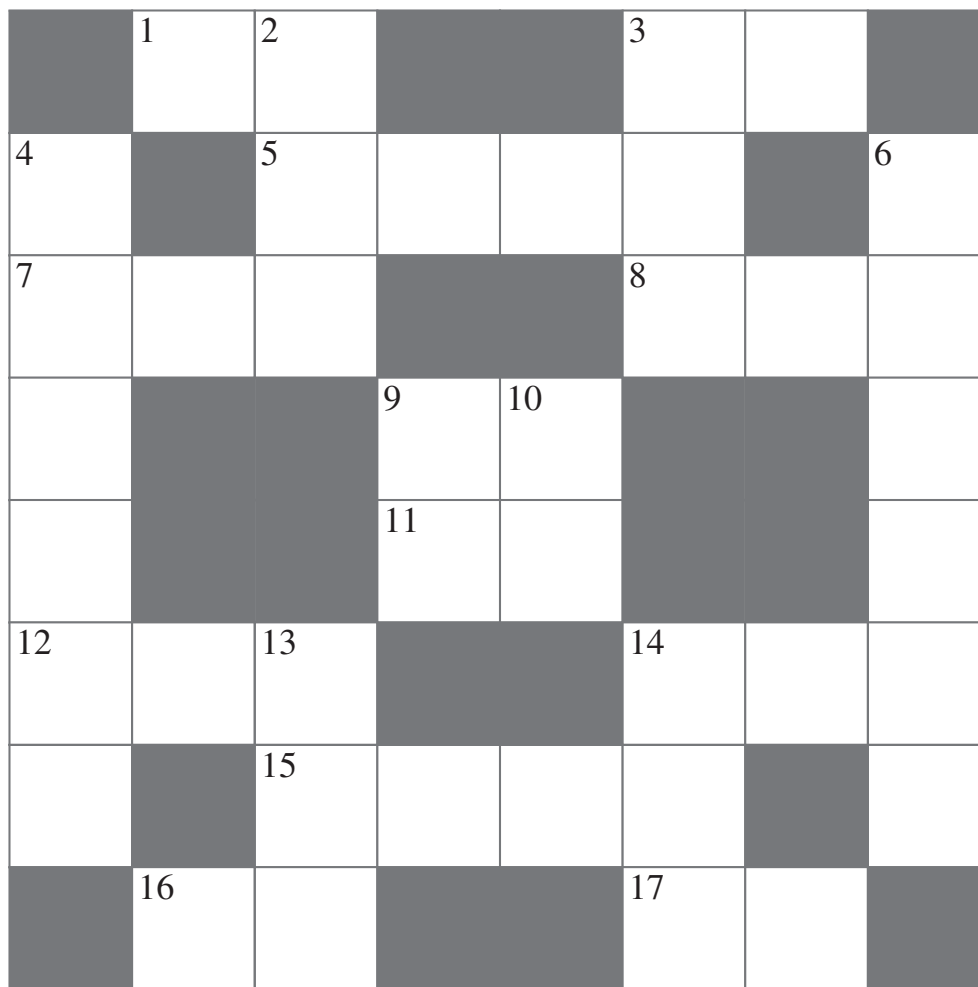


PRIMARY TEAM MATHS RESOURCES  
2017

# SUPERVISOR'S BOOKLET

Please ensure that students do not have access to this booklet, and take care to hold it so that answers cannot be seen.

# CROSSNUMBER



## ACROSS

1. 16 ACROSS – 9 ACROSS (2)
3. Sum of the digits of 6 DOWN (2)
5. 14 ACROSS times 1 ACROSS (4)
7. Rearrange the digits in (15 ACROSS divided by 10) (3)
8. A digit sum of 24 and 293 times a prime number. (3)
9. A square and a cube number (2)
11. Twice 17 ACROSS (2)
12. 9 ACROSS + 13 DOWN (3)
14. One less than a square number (3)
15. (3 DOWN + 13 DOWN – 10) times 10 (4)
16. A multiple of 11 (2)
17. (7 ACROSS – 8 ACROSS) divided by 5 (2)

## DOWN

2. A square number (3)
3. 12 ACROSS + 13 DOWN (3)
4. 5 ACROSS times 16 ACROSS – 70 (6)
6. 9000 times 16 ACROSS + 4 times 9 ACROSS (6)
9. A multiple of 7 (2)
10. One more than 3 times 1 ACROSS (2)
13. Difference between 7 squared and 14 squared. (3)
14. The first 3 digit prime number (3)

# CROSSNUMBER

	<sup>1</sup> 1	<sup>2</sup> 3			<sup>3</sup> 3	1	
<sup>4</sup> 1		<sup>5</sup> 2	5	3	5		<sup>6</sup> 6
<sup>7</sup> 9	5	4			<sup>8</sup> 8	7	9
5			<sup>9</sup> 6	<sup>10</sup> 4			3
1			<sup>11</sup> 3	0			2
<sup>12</sup> 2	1	<sup>13</sup> 1			<sup>14</sup> 1	9	5
5		<sup>15</sup> 4	9	5	0		6
	<sup>16</sup> 7	7			<sup>17</sup> 1	5	

1. 7	6. 100	11. 66
2. 6	7. 17:55 hours or 5:55pm	12. 74 minutes
3. 3	8. 21	13. 18:00 hours or 6pm
4. 301	9. 4 hours 9 minutes 24 seconds	14. 51
5. £8	10. 28	15. 4

On the RESPONSE SHEET:

Award 4 marks for a correct answer.

Circle the mark awarded for each question and cross out the other .

1  E	6  C	11  D
2  E	7  E	12  B
3  D	8  D	13  D
4  D	9  C	14  C
5  A	10  B	15  E

On the RESPONSE SHEET: Award 4 marks for a correct answer.  
Circle the mark awarded for each question and cross out the other.

P	M	T	R	C
T	M	C	R	P
R	C	T	P	M
C	R	M	T	P
C	R	T	M	P

On the RESPONSE SHEET:

Circle the mark awarded for each question and cross out the other.

TEAM NUMBER

SCHOOL NAME

There may be a variety of ways of solving these problems so please check answers carefully. A possible solution for each question is given below.

<p>1</p> $4 \times 100 + 9 + 6 - 4$ <p style="text-align: right;">0 3 4</p>	<p>6</p> $(50 - 4) \times 5 \times 4$ <p style="text-align: right;">0 3 4</p>
<p>2</p> $3 \times 7 + 8 + 9 + 100$ <p style="text-align: right;">0 3 4</p>	<p>7</p> $(3 \times 3 - 2) \times (8 - 1) + 75$ <p style="text-align: right;">0 3 4</p>
<p>3</p> $7 \times (50 + 6) - 6 + 4$ <p style="text-align: right;">0 3 4</p>	<p>8</p> $3 \times (75 - 4 \times 2)$ <p style="text-align: right;">0 3 4</p>
<p>4</p> $100 \times 9 + 3 \times (2 \times 6 + 1)$ <p style="text-align: right;">0 3 4</p>	<p>9</p> $(3 + 3 + 4 + 7) \times 50 - 8$ <p style="text-align: right;">0 3 4</p>
<p>5</p> $(6 + 6) \times 25 + 3 + 5 + 5$ <p style="text-align: right;">0 3 4</p>	<p>10</p> $9 \times (25 + 9) + 5 \div 5$ <p style="text-align: right;">0 3 4</p>

Award 4 marks for a correct answer.  
Circle the mark awarded and cross out the others.

FINAL SCORE /40

TEAM NUMBER  SCHOOL NAME

<b>A1</b> 138 0 2	<b>A6</b> 240 ° 0 2	<b>A11</b> 169 0 2
<b>B1</b> 4 0 2	<b>B6</b> 10p 0 2	<b>B11</b> 42 m <sup>2</sup> m <sup>2</sup> 0 2
<b>A2</b> $\frac{1}{13}$ 0 2	<b>A7</b> $\frac{1}{12}$ 0 2	<b>A12</b> 16 0 2
<b>B2</b> 7 0 2	<b>B7</b> $\frac{5}{6}$ 0 2	<b>B12</b> 52 kg kg 0 2
<b>A3</b> 338 0 2	<b>A8</b> 272 0 2	<b>A13</b> £1.50 0 2
<b>B3</b> $\frac{3}{13}$ 0 2	<b>B8</b> 40 ° 0 2	<b>B13</b> $\frac{1}{4}$ 0 2
<b>A4</b> 36 0 2	<b>A9</b> 95 040 0 2	<b>A14</b> 5 0 2
<b>B4</b> 25 000 0 2	<b>B9</b> 9 0 2	<b>B14</b> 10 0 2
<b>A5</b> 6 0 2	<b>A10</b> 12 0 2	<b>A15</b> 2 0 2
<b>B5</b> 173 0 2	<b>B10</b> 3p 0 2	<b>B15</b> 20 ° 0 2

Correct answers score 2 points: circle 2 or 0 for each question and cross out the other number. At the end of the round, draw a line under the last question attempted.

FINAL SCORE /60

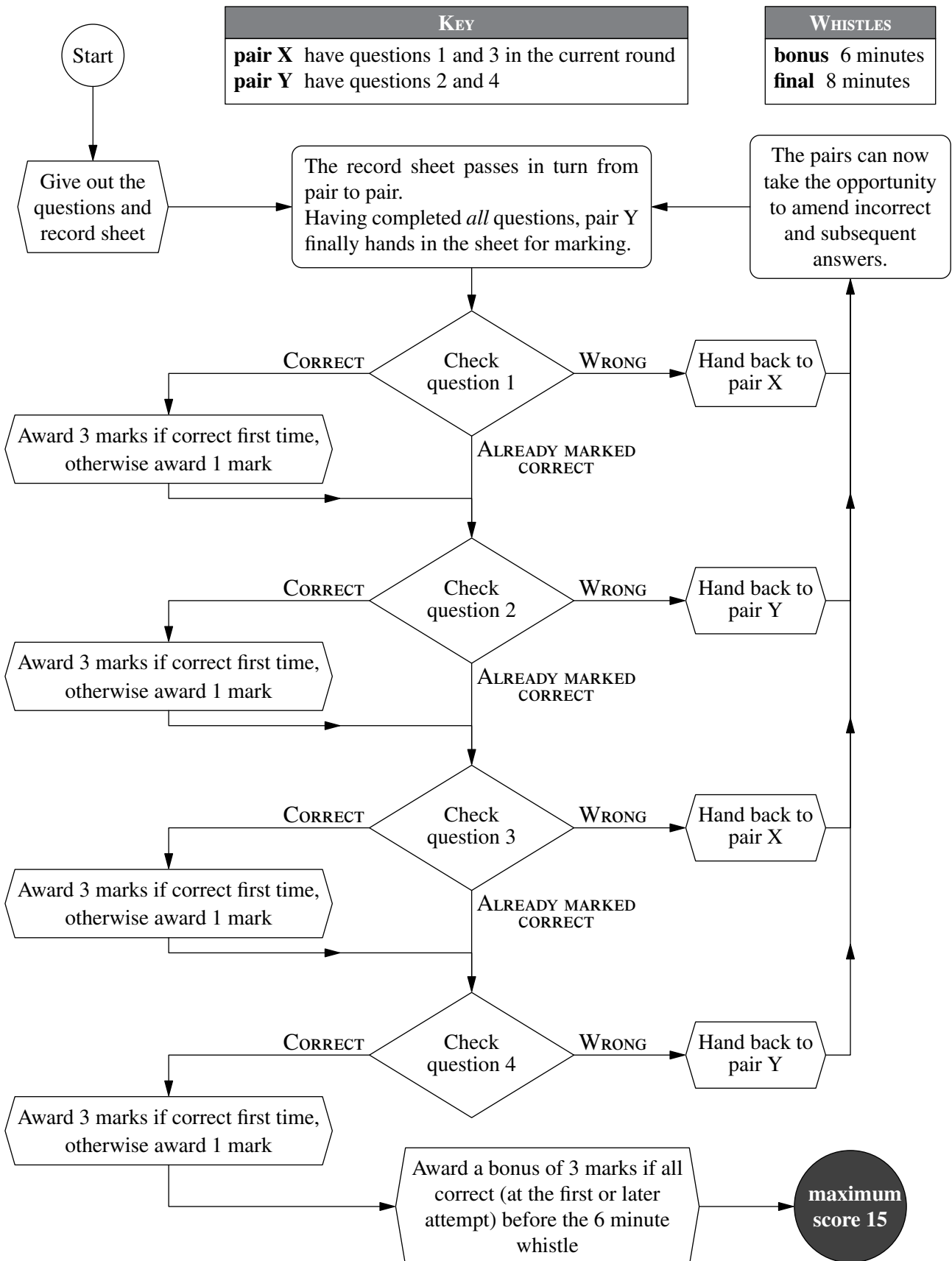


<b>A1</b>  198	<b>B1</b>  19	<b>C1</b>  3030	<b>D1</b>  62
<b>A2</b>  139	<b>B2</b>  83	<b>C2</b>  £677	<b>D2</b>  7
<b>A3</b>  82	<b>B3</b>  13	<b>C3</b>  274	<b>D3</b>  4
<b>A4</b>  96	<b>B4</b>  200	<b>C4</b>  141	<b>D4</b>  240

On the RESPONSE SHEET:

Circle the mark awarded for each question and cross out the others.  
At the end of the round, either circle the bonus mark or cross it out.

The flowchart explains the order in which questions should be marked.



1	6	11	16
100	216	180	44 415
2	7	12	17
6	32	$\frac{4}{7}$	20
3	8	13	18
30	30	7	15
4	9	14	19
42	6	£3.25	650
5	10	15	20
2400	2 hours 55 minutes	73	20

On the RESPONSE SHEET:

Award 3 marks for a correct answer.

Circle the mark awarded for each question and cross out the other.

BACK

PAGE